



April 2016 - Revision B  
**Quick Coupling Division**  
 8145 Lewis Road  
 Minneapolis, MN 55427  
 phone 763 544 7781  
 fax 763 544 3418

# SUBSEA COUPLING SOLUTIONS

## DSL Series Data Sheet



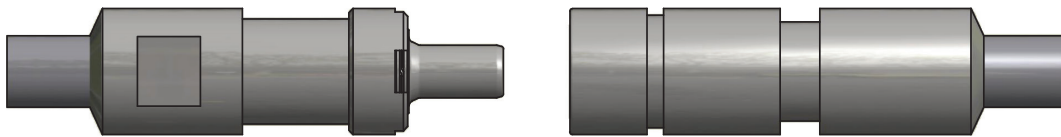
DSL Series couplings are designed for low separation force while under pressure. Durable PEEK or optional metal seals provide confidence for connection and disconnection at full pressure and depths down to 3000 meters.

**Features:**

- Sizes 1/4" - 1 1/2"
- Up to 15,000 psi (1034 bar)
- Poppet valves
- Redundant sealing
- Metal or PEEK primary seal, PEEK secondary seal
- Parker Nitrile O-rings standard
- Body material: Nitronic® 50HS
- Internal component materials: Nitronic® 50HS, 316 SST or ToughMET® AT110. Springs are Inconel® X-750 or Elgiloy®

**Options:**

- Various O-ring materials
- Guide sleeve
- Vented valving
- Welded assembly or 2-piece threaded version
- Various end configurations: Autoclave, Weld prep, tube stub (others available upon request)
- Rear plate mounting



Size	Working Pressure (psi/bar)	Rated Working Depth (ft/m)	Cv per Coupling Half	Separation Force (lb/1000 psi & N/100 bar)	Water Ingress per Connect (ml)	Poppet Crack Pressure (psi/bar)	Length* (in/mm)	Min. Plate Bore Diameter* (in/mm)
1/4"	15,000/1034	10,000/3050	1.5	142/915	2.9	200/13.8	Male: 3.6/91	0.875/22.23
							Female: 3.6/91	
1/2"	15,000/1034	10,000/3050	3.5	307/1981	5.7	200/13.8	Male: 5.0/127	1.250/31.75
							Female: 5.0/127	
1"	15,000/1034	10,000/3050	9.0	691/4459	12.1	200/13.8	Male: 5.8/147	1.800/45.72
							Female: 5.8/147	
1 1/2"	10,000/689	10,000/3050	19.1	1267/564	38.2	200/13.8	Male: 7.0/178	2.550/64.77
							Female: 7.0/178	

Data given is representative of the coupling series. Individual couplings may vary based on specific configuration of fittings/optional features.  
 \* Minimum bore diameter and length are reference. May change for a specific plate configuration.